



AXO Automatic Swing Gate Operators

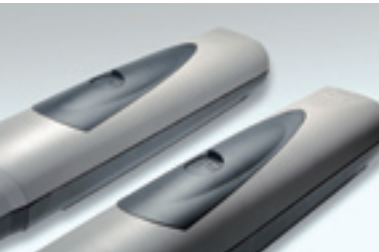
The new 24V D.C. and 120V A.C. electromechanical operators are designed for a long, healthy life and ensure the utmost safety even with larger gates up to 10, 16 and 23-foot long leaves. The revolutionary double-threaded, worm screw drastically reduces wear on the axle box. Further, the impact force developed by the gate movement complies with current safety regulations.



State-of-the-Art Technology

Besides the usual control and safety functions, Axo's 24V D.C technology provide certain details that allow for total control of the operator and optimal operating conditions. For example:

- **Gain total control of the gate from the transmitter**
Including the possibility of immediately stopping the movement of the gate leaves.
- **Program the gate to partially open**
Ideal for all entrances that don't have a specified pedestrian gate.
- **Activate a system with safety-devices test**
Performed prior to each gate's opening and closing cycle.



When reliability is a matter of principle

Say hello to top-notch quality that offers a seamless and silent operation. The gear motor features bearing semi-shells in die-cast aluminum and is equipped with an adjustable mechanical stop to memorize the gate run. The Axo is available in a 24V D.C. version with a simplified connection system providing only one single, three-wired cable, whereas the innovative 120V A.C. technology offers simplified efficiency with enhanced control over the gate descent.

A design to serve the world.

CAME has designed an excellent versatile bearing structure. The swing gates are available in sizes ranging from 9.8 and 23 feet per leaf, enabling it to engage smoothly into a single semi-shell structure.



Encoder management.

Safety is further enhanced by controlling the slow-down speed of the 120V A.C. gear motor with encoder technology. The unique technology helps manage the force generated when in operation.



Wears the ETL stamp of approval.

Axo technology complies with the current North American safety standards relative to impact force.



The Axo offers many innovative features, including:

- **True reliability.**
The electronics of the 24V D.C. operator can be equipped with a device that, in the event of a blackout, activates the emergency battery back-up function.
- **Improved electromechanical design.**
Axo is an electromechanical operator that maintains the CAME standard. It is designed for durability and dependability, even under severe climatic conditions.
- **Latest technology.**
The revolutionary double-threaded, worm screw drastically reduces wear on the axle box.

The Advantages of Axo

When total comfort, performance and safety are a must, Axo's technology exceeds the highest standards by providing the following advantages:

- **No more blackouts**
Axo's 24V D.C. technology automatically detects any absence of power and immediately activates the emergency back-up batteries to ensure the gate will always be able to open and close (optional).
- **Frequent passages**
The low-voltage gear motor guarantees operation even in extremely high-traffic areas, such as in apartment complexes and commercial settings.
- **Obstacle detection**
A special electronic circuit continuously sweeps for any obstacles surrounding the gate leaves, and if needed, stops or inverts the direction of motion.

Adjustable mechanical stop

Axo is equipped with adjustable mechanical stop to memorize the gate run. This feature is also available in the 24V D.C. version, and promises a simplified connection system with only one single, three-wired cable. Such innovative technology provides efficient and simple control of slowing down movements.

AXO Automatic Swing Gate Operators

clearance of up to 23 ft.



External 120V A.C. operators and control panel

- 001AX71110 Reversible operator for gate leaves up to 23 ft. (Opening time 90°: 40s)
- 002ZM3E110 Multifunction control panel with signalling display, self-diagnosis of safety devices and built-in radio decoding

24V D.C. external operators and control panel

- 001AX3024U Self-locking operator for gate leaves up to 10 ft. (Opening time 90°: adjustable)
- 001AX5024U Self-locking operator for gate leaves up to 16 ft. (Opening time 90°: adjustable)
- 002ZLJ24U Control panel for two-leaf swing gate with built-in radio decoder



Excellent quality

The gear motor has bearing semi-shells created from die-cast aluminum that are constructed in such a way to ensure silent operation.



Compliant with UL 325 STD and CSA STD C22.2 No. 247 for both the US & Canada



Compliant with UL 325 STD and CSA STD C22.2 No. 247 for both the US & Canada

	Product Code	Operator Model (2 included)	Max. Leaf (ft.)	Control Box with Main Board	2 Remote 001TOP-432NA	Receiver Card 001AF43S	Photocells 001DIR10	Photocells 001DIR20	Extnl. Antenna 001TOP-A433N	KIARO Flashing Light 001KIARO24N	Battery Back-up Card 002LB180
Basic	KT-SW-AX/L-B3014-1	001AX3024U	10	•	•	•					
	KT-SW-AX/L-B5014-1	001AX5024U	16	•	•	•					
	KT-SW-AX/L-B7010-1	001AX71110	23	•	•	•					
Professional	KT-SW-AX/L-P3014-1	001AX3024U	10	•	•	•	•				
	KT-SW-AX/L-P5014-1	001AX5024U	16	•	•	•	•				
	KT-SW-AX/L-P7010-1	001AX71110	23	•	•	•		•			
Expert	KT-SW-AX/L-E3014-1	001AX3024U	10	•	•	•	•		•	•	•
	KT-SW-AX/L-E5014-1	001AX5024U	16	•	•	•	•		•	•	•
	KT-SW-AX/L-E7010-1	001AX71110	23	•	•	•		•	•	•	

Technical features

Type	001AX71110	001AX3024U	001AX5024U
Protection rating	IP44	IP44	IP44
Power supply (V) (50/60Hz)	120V A.C.	120V A.C.	120V A.C.
Motor power supply (V)	120V A.C.	24V D.C.	24V D.C.
Current draw (A)	1,5	10 MAX	10 MAX
Power (HP)	1/3	1/4	1/4
90° opening time (s)	40	Adjustable	Adjustable
Duty cycle (%)	30	Intensive use	Intensive use
Thrust (N)	500 - 4500	500 - 4500	500 - 4500
Operating temperature (°F)	-4°F up to 131°F		
Motor's thermo-protection (°F)	302		

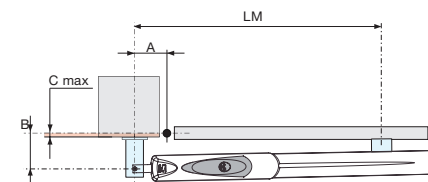
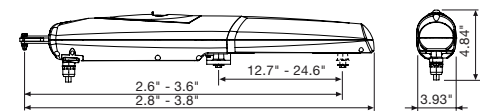
● 120V A.C. ● 24V D.C.

Accessories

24V

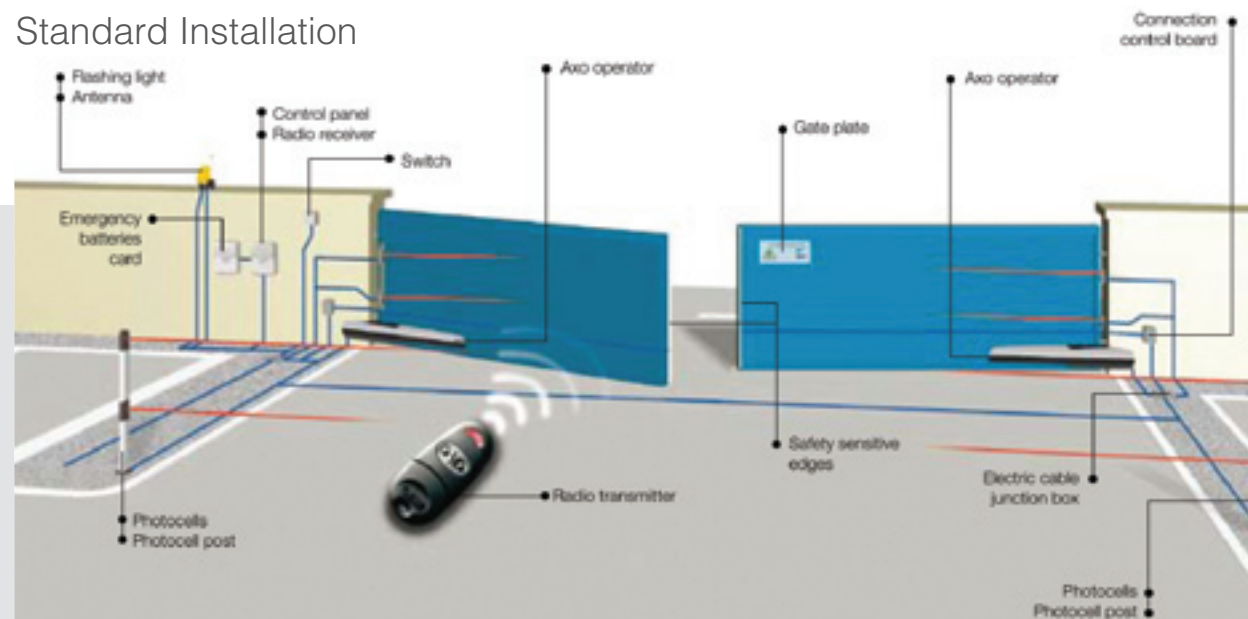
- 002LB180**
Card for connecting (2) 12V - 1.2Ah emergency batteries and battery-support bracket
- 001LOCK81**
Electric lock with single cylinder
- 001LOCK82**
Electric lock with double cylinder
- 001AF43S**
433.92 MHz plug-in radio frequency receiver card
- 001TOP-432NA**
Bi-channel multi-user remote control. 4,096 self-learning combinations
- 001DIR10**
Pair of photocells. Range: 32 ft.
- 001DIR20**
Pair of photocells. Range: 65 ft.
- 001TOP-A433N**
Antenna
- 001KIARO24N**
Warning flashing light

Dimensions



Type	Opening	A (in)	B (in)	C max (in)	LM (in)
AXO 3	90°	5.11	5.11	2.75	31.49
	120°	5.90	3.93	1.96	31.49
AXO 5	90°	7.87	8.66	5.90	43.3
	120°	8.66	8.66	3.93	43.3
AXO 7	90°	7.87	8.66	5.90	43.3
	120°	8.66	8.66	3.93	43.3

Standard Installation



Limits to use

Model	001AX3024U	001AX5024U	001AX71110				
Max width of gate leaf (ft.)	6.5	8	10				
Max weight of gate leaf (lb.)	1,760	1,320	1,100				
Max width of gate leaf (ft.)	6.5	8	10	13*	16*		
Max weight of gate leaf (lb.)	2,200	1,760	1,550	1,100	880		
Max width of gate leaf (ft.)	6.5	8	10	13*	16*	20°	23°
Max weight of gate leaf (lb.)	2,200	1,760	1,550	1,100	880	770	660

● 120V A.C. ● 24V D.C.

NOTE:

* If it is larger than 10 ft., the blocking electric lock must be installed on the leaf.
 ° If it is larger than 16 ft., panels must not be fitted.
 Attention must be paid when there is a strong wind with the reversible versions, if the gate is open, as it could slam shut.



New



24V D.C. gear motor powered directly from the control panel.